

# **WORKSAVER®**

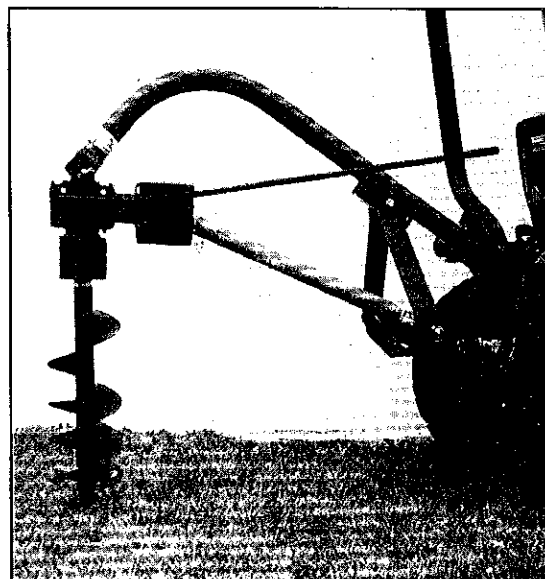
P. O. Box 100 • Litchfield, Illinois 62056-0100 • (217) 324-5973 • Fax (217) 324-3356

## **COMPACT/UTILITY TRACTOR POST HOLE DIGGER**

The model 300 post hole digger is designed to fit most 14 - 24 horsepower tractors equipped with a category 0 three-point hitch and a 540 rpm PTO. (This model will fit the 16 hp Kubota model B7100 tractor)

The model 300 post hole digger handles 6", 9" and 12" diameter standard duty 30" length augers. The three position boom allows the unit to fit a variety of tractor models.

A lever is provided for the operator to adjust the auger starting angle. The gearbox has a 3:1 gear ratio and is protected by the shear-pin PTO drive. The gearbox features tapered roller bearings and spring loaded seals. The gearbox has a 5 year limited warranty. The model 300 digger is built for years of trouble-free work with a minimum amount of maintenance.



<b>Item #</b>	<b>Description</b>	<b>Wt.</b>
170550	<b>Model 300 Post Hole Digger - Less Auger</b>	149
<b>OPTIONS LISTED BELOW</b>		
170810	<b>DFK-50 Down Force Kit - with hydraulic cylinder and hoses</b>	39
170802	<b>Fishtail Auger Center Point - for stony conditions</b>	4
<b>POST HOLE AUGERS - 30" length</b>		
170560	<b>6" Single Flight Auger w/teeth</b>	19
170565	<b>9" Single Flight Auger w/teeth</b>	25
170570	<b>12" Single Flight Auger w/teeth</b>	28
<b>NOTICE:</b> Retro-fit safety guards are available for all Work saver diggers and extensions. Please state model when ordering.		

**SOLD BY:**



PHD-300-3/97

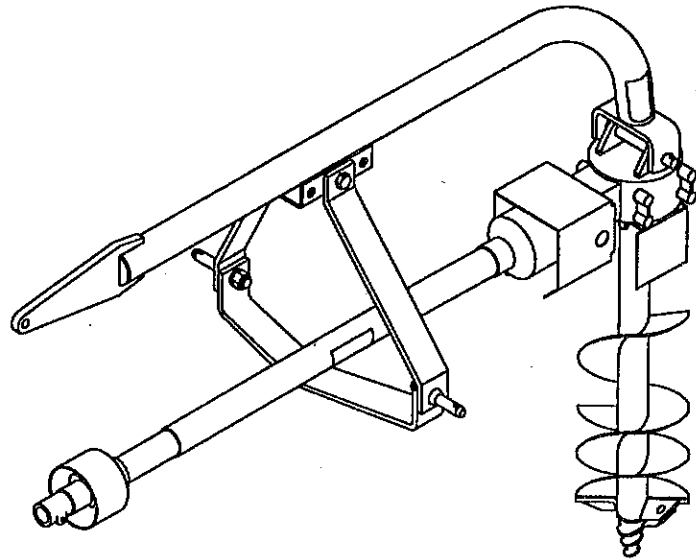
**WORKSAVER, INC.**  
P. O. Box 100, Litchfield, IL. 62056-0100  
(217) 324-5973 • Fax (217) 324-3356

# OWNER'S MANUAL

MODEL NO.  
300

## CAUTION

For Safe Operation  
Read Rules And  
Instructions Carefully



## STATEMENT OF POLICY

It is the policy of **Worksaver, Inc.** to improve its products where it is possible and practical to do so. **Worksaver, Inc.** reserves the right to make changes or improvements in design and construction at any time, without incurring the obligation to make these changes on previously manufactured units.

## LIGHT DUTY 3-PT. MOUNTED POST HOLE DIGGER

For small 14 - 24 hp tractors with Cat. 0 3-pt. hitch

**Safety Instructions**  
**Tractor Preparation**  
**Operating Instructions**

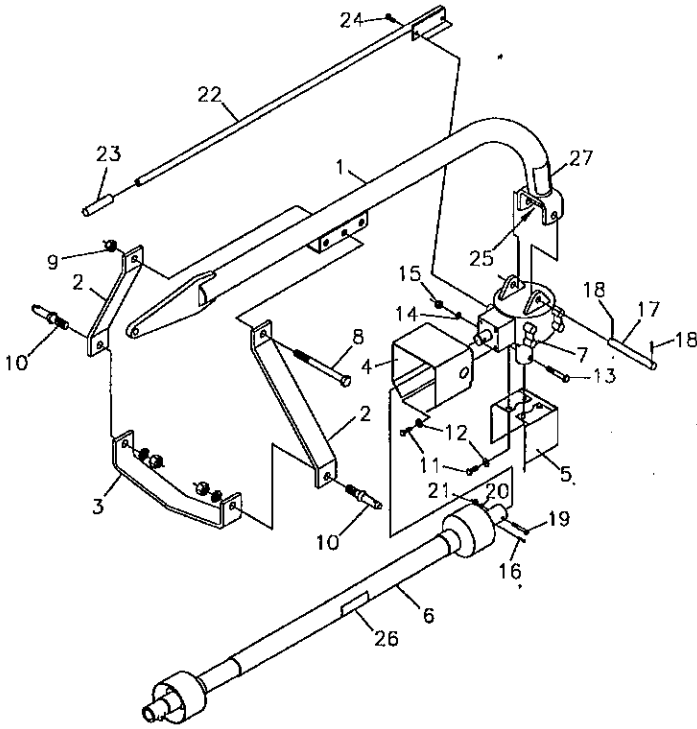
**Assembly & Mounting**  
**Maintenance**  
**Repair Parts**

## CAUTION

**THE FOLLOWING SAFETY PRECAUTIONS SHOULD BE THOROUGHLY UNDERSTOOD  
BEFORE ATTEMPTING TO BEGIN ASSEMBLING THIS MACHINE**

1. Select an area for assembly that is clean and free of any debris which might cause persons working on the assembly to trip.
2. Do not lift heavy parts or assemblies. Use crane, jack, tackle, fork trucks or other mechanical devices.
3. Preview the assembly instructions in your operator's manual before proceeding further.
4. If the assembly instructions call for parts or assemblies to be blocked up, use only blocking material that is in good condition and is capable of handling the weight of the assembly to be blocked. Also insure that the blocking material is on a clean, dry surface.
5. Never put hands, or any part of body, under blocked up assemblies if at all possible.
6. After completing assembly, thoroughly inspect the machine to be sure that all nuts, bolts, hydraulic fittings or any other fastened assemblies have been thoroughly tightened.
7. Before operating the machine, thoroughly read the operation section of your operator's manual.
8. Before operating, read the maintenance section of your operator's manual to be sure that any parts requiring lubrication, such as gearboxes, are full, to avoid any possible damage.
9. **Before operating equipment – If you have any questions regarding the proper assembly or operation, contact your Worksaver dealer or representative.**

# 300 POST HOLE DIGGER REPAIR PARTS



REF. NO.	PART NO.	DESCRIPTION	NO. REQ.
1	170551	Boom Weldment	1
2	170557	Side Bar	2
3	170558	Lower Bar	1
4	170918	Input Shield	1
5	170916	Output Shield	1
6	3814011	PTO Shaft Complete	1
NS	3814020	1/2 PTO (Implement End)	1
NS	3814021	1/2 PTO (Tractor End)	1
NS	170803	Yoke 1 1/4" Dia. (Smooth Bore) Implement End	1
NS	170804	Yoke 1 3/4" (6B Spline) Tractor End	1
NS	3814091	PTO Cross Repair Kit	Var.
NS	3814094	Plastic Shield Assembly (Tractor End)	1
NS	3814096	Plastic Shield Assembly (Implement End)	1
7	170901	Gearbox (Corner)	1
8	2503068	Hex Head Bolt 3/4" - 10UNC x 5 1/2"	1
9	2500037	Nylock Hex Nut 3/4" - 10UNC	1
10	590108	AK-578 Draw Pin	2
11	2503123	Hex Head Bolt M8 x 12MM	8
12	2501012	Medium Flat Washer 5/16"	8
13	2503012	Hex Head Bolt 1/2" - 13UNC x 3"	2
14	2502002	Spring Lock Washer 1/2"	2
15	2500003	Hex Nut 1/2" - 13UNC	2
16	2504011	Roll Pin 3/16" x 1-1/4"	1
17	3814014	Pin, Gearbox Hitch	1
18	2504121	Cotter Pin 3/16" x 1 1/2"	2
19	2503098	Bolt, 5/16" - 18NC x 2 1/2" Hex Head	1
20	2502011	Washer, Springlock 3/16"	1
21	2500011	Nut, 5/16" - 18NC Full Hex	1
22	170555	Handle Weldment	1
23	3814013	Handle Grip	1
24	2503030	Bolt, 3/8" - 16NC x 3/4" Hex Head	2
25	101015	Instruction Decal	1
26	101081	Driveline Entanglement Decal	1
27	101130	Danger Decal (Rotating Parts)	1

## AUGER TOOTH ARRANGEMENT

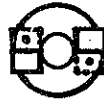


FIG. B - 6"

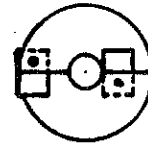


FIG. C - 9"

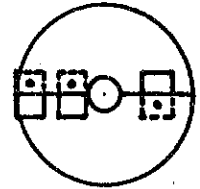
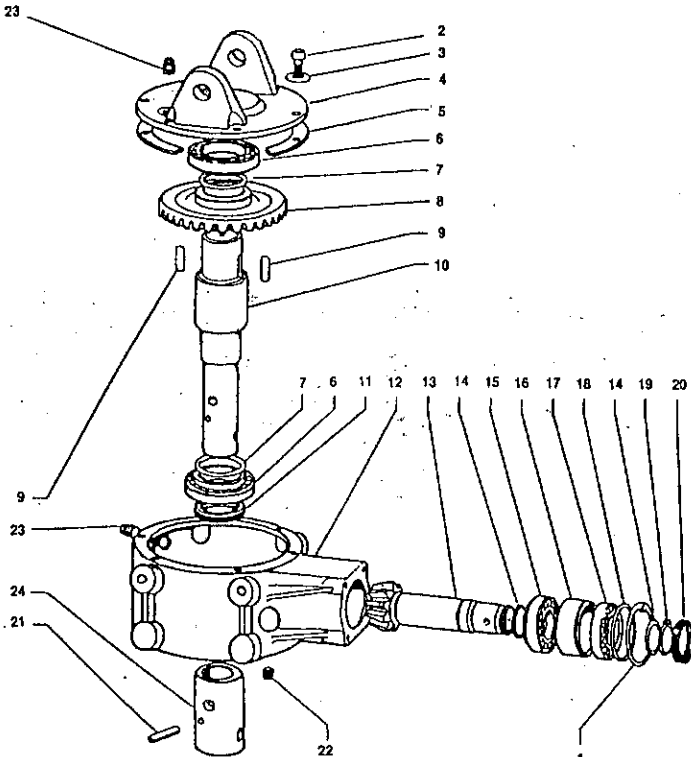


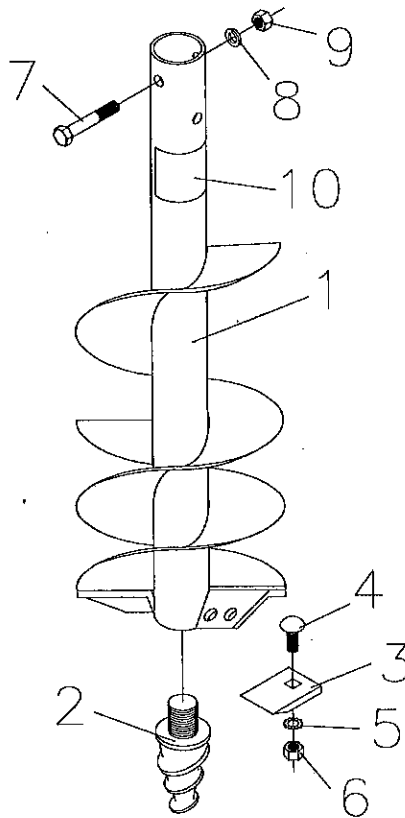
FIG. D - 12"



## GEARBOX REPAIR PARTS

REF. NO.	PART NO.	DESCRIPTION	NO. REQ.
1	171001	Internal Circlip 72	1
2	171002	Spring Washer	6
3	171003	Cap Screw M 8 x 22	6
4	171004	Cover	1
5	171005	Gasket	1
6	171006	Bearing 30208	2
7	171007	Shim	2
8	171008	Output Gear 230M.5	1
9	171009	Key 10 x 8 x 30	2
10	171010	Shaft (Output)	1
11	171011	Oil Seal 40 x 62 x 7 (Output)	1
12	171012	Casing	1
13	171013	Pinion Z 10 M 5	1
14	171014	Thickness	2
15	171015	Bearing 30207	1
16	171016	Spacer Ring	1
17	171017	Bearing 6207	1
18	171018	Shim	1
19	171019	Outside Circlip 35	1
20	171020	Oil Seal 35 x 72 x 10 (Input)	1
21	171021	Spring Pin 8 x 12	1
22	171022	Oil Drain Plug	1
23	171023	Oil Plug	2
24	171024	Bushing	1

# 30" AUGER REPAIR PARTS



REF. NO.	PART NO.	DESCRIPTION	NO. REQ.
1	170562	6" Diameter Auger (30")	1
	170567	9" Diameter Auger (30")	1
	170572	12" Diameter Auger (30")	1
2	210007	Auger Point -- Screw Type	1
3	171903	Cutting Edge -- 6" Augers Only	2
	706021	Red Claw Digger Teeth -- 9" & 12" Augers	Var.
4	2503178	Bolt 3/8" -- 16NC x 1 1/4" Carriage Head -- 6" Augers	2
	2503166	Bolt 1/2" -- 13NC x 1 1/4" Carriage Head -- 9" & 12" Augers	Var.
5	2502014	Washer 3/8" External Star -- 6" Augers	2
	2502003	Washer 1/2" External Star -- 9" & 12" Augers	Var.
6	2500004	Nut 3/8" -- 16NC Full Hex -- 6" Augers	2
	2500003	Nut 1/2" -- 13NC Full Hex -- 9" & 12" Augers	Var.
7	2503012	Bolt 1/2" -- 13NC x 3" Hex Head	2
8	2502002	Washer 1/2" Springlock	2
9	2500003	Nut 1/2" -- 13NC Full Hex	2
10	101131	Decal -- Danger (Guard Missing)	1